



FOR YOUTH DEVELOPMENT®
FOR HEALTHY LIVING
FOR SOCIAL RESPONSIBILITY

Camp Emergency Plans

Camp Lehigh | Catasauqua

EVACUATION ROUTE FROM: River Crossing YMCA Child care Catasauqua Camp, 880 Walnut Ave Catasauqua pa 18032 TO Catasauqua Middle School, 850 Pine St Catasauqua pa 18032

← from 880 Walnut St, Catasauqua, PA 18032
to 850 Pine St, Catasauqua, PA 18032

880 Walnut St
Catasauqua, PA 18032

- ↑ Head southwest toward Walnut St
98 ft
- ↪ Turn right onto Walnut St
446 ft
- ↶ Turn left toward Water St
184 ft
- ↪ Turn right toward Water St
210 ft
- ↶ Turn left onto Water St
197 ft
- ↶ Turn left
0.1 mi
- ↪ Turn right
39 ft

850 Pine St

Search along the route

Restaurants Coffee Groceries Things to do

10 min 0.4 miles

8 min 0.3 miles

Google

Map data ©2024 United States Terms Privacy Send Product Feedback

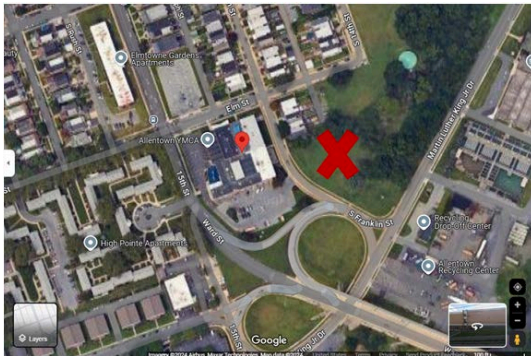


FOR YOUTH DEVELOPMENT®
FOR HEALTHY LIVING
FOR SOCIAL RESPONSIBILITY

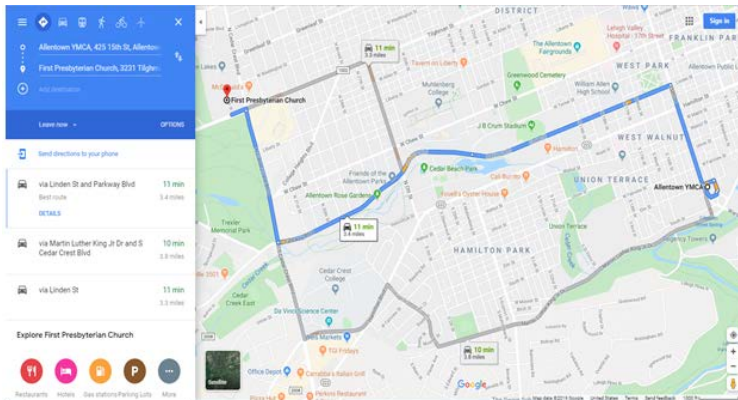
Camp Emergency Plans

Camp Lehigh | Allentown

Facility Layout and Assembly Area



EVACUATION ROUTE FROM: River Crossing YMCA Child Care Center at Allentown Branch, 425 S. 15th St Allentown, PA, 18102 TO FIRST PRESBYTERIAN CHURCH: 3231 W Tilghman St, Allentown, PA 18104

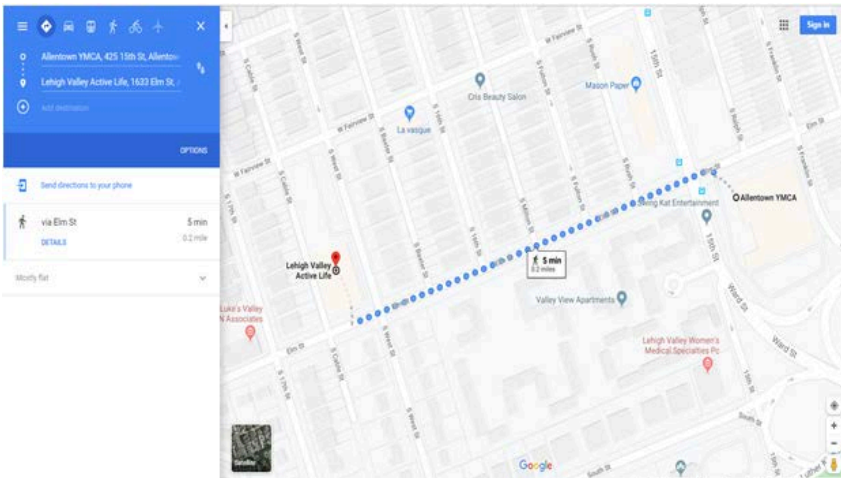




FOR YOUTH DEVELOPMENT®
FOR HEALTHY LIVING
FOR SOCIAL RESPONSIBILITY

Camp Emergency Plans

EVACUATION ROUTE FROM: River Crossing YMCA Child Care Center at Allentown Branch, 425 S. 15th St Allentown, PA, 18102 TO Lehigh Valley Active Life, 1633 Elm St Allentown, PA, 18102





FOR YOUTH DEVELOPMENT®
FOR HEALTHY LIVING
FOR SOCIAL RESPONSIBILITY

Camp Emergency Plans

Camp Lehigh | Lehigh Township

EVACUATION ROUTE FROM: River Crossing YMCA Lehigh Township camp, 800 Blue Mountain Dr. Walnutport Pa, 1888 TO Lehigh Township Fire Company-4188 Lehigh Dr, Walnutport pa 18088

← from 880 Blue Mountain Dr, Walnutport, PA 18088 to 4188 Lehigh Dr, Northampton, PA 18067

2 min (1.2 miles)

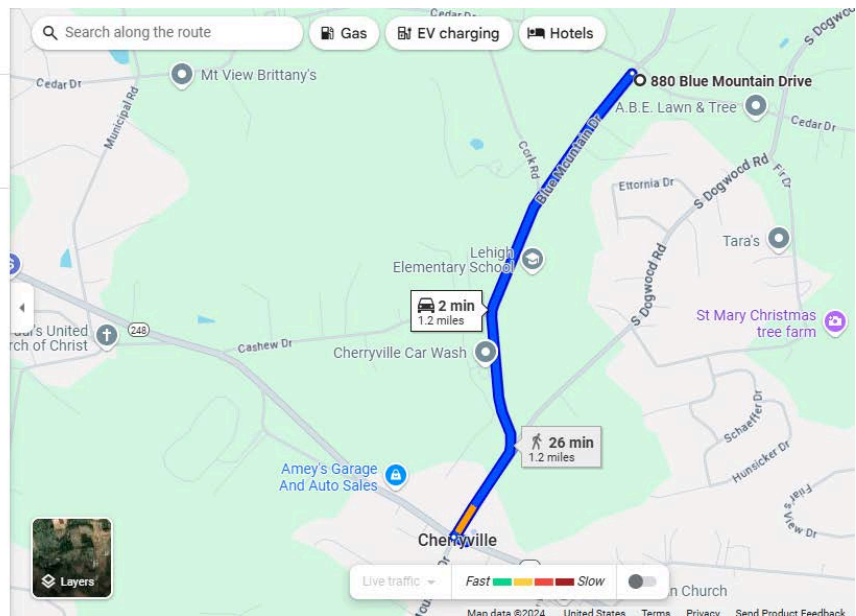
via Blue Mountain Dr
Fastest route, the usual traffic

880 Blue Mountain Dr
Walnutport, PA 18088

↑ Head southwest on Blue Mountain Dr toward Cork Rd
1.1 mi

← Turn left onto Lehigh Dr
Destination will be on the left
144 ft

4188 Lehigh Dr
Northampton, PA 18067



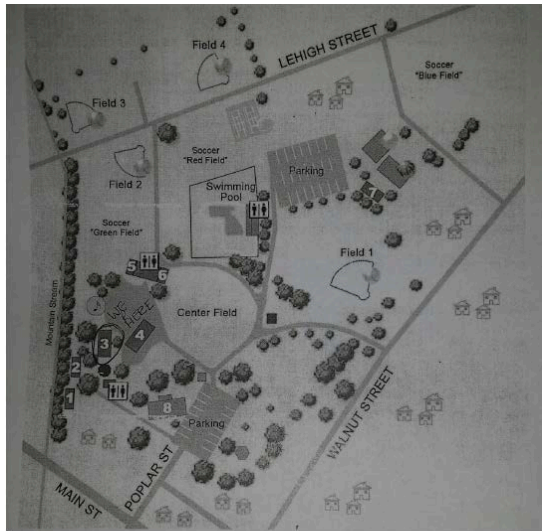


FOR YOUTH DEVELOPMENT®
FOR HEALTHY LIVING
FOR SOCIAL RESPONSIBILITY

Camp Emergency Plans

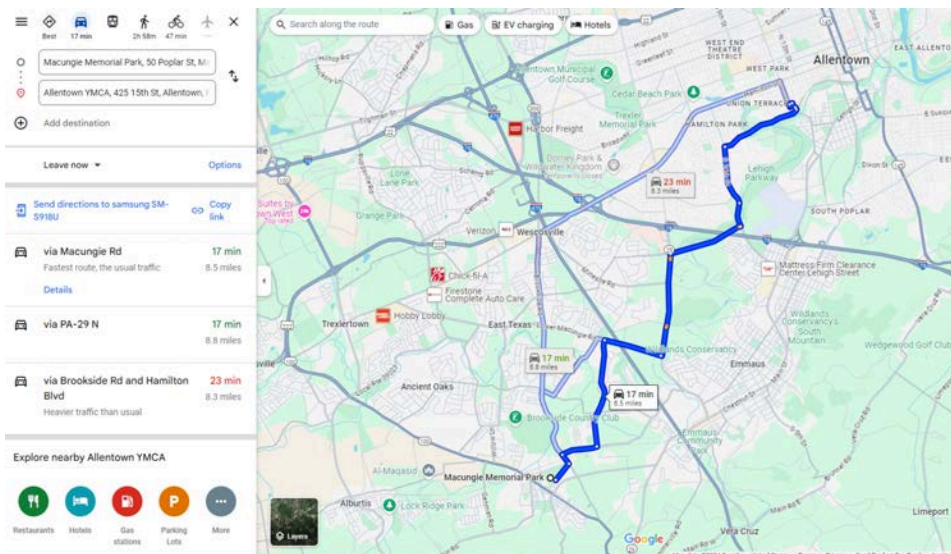
Camp Lehigh | Macungie

Facility Layout and Assembly Area



Macungie Park
Camp Macungie located in Pavilion #3

EVACUATION ROUTE FROM: Macungie Memorial Park, 50 North Poplar Street, Macungie, PA 18069 to River Crossing YMCA Child Care Center at Allentown Branch, 425 South 15th St Allentown, PA, 18102





FOR YOUTH DEVELOPMENT®
FOR HEALTHY LIVING
FOR SOCIAL RESPONSIBILITY

Camp Emergency Plans

Camp Lehigh | Whitehall

EVACUATION ROUTE FROM: River Crossing YMCA Child care center of Whitehall, 2932 Zephyr Blvd Whitehall pa 18052 to Zephyr Elementary 2934 Zephyr Blvd whitehall pa 18052

← from 2932 Zephyr Blvd, Whitehall, PA 18052 to 2934 Zephyr Blvd, Whitehall, PA 18052

⚠ Use caution—walking directions may not always reflect real-world conditions

2932 Zephyr Blvd
Whitehall, PA 18052

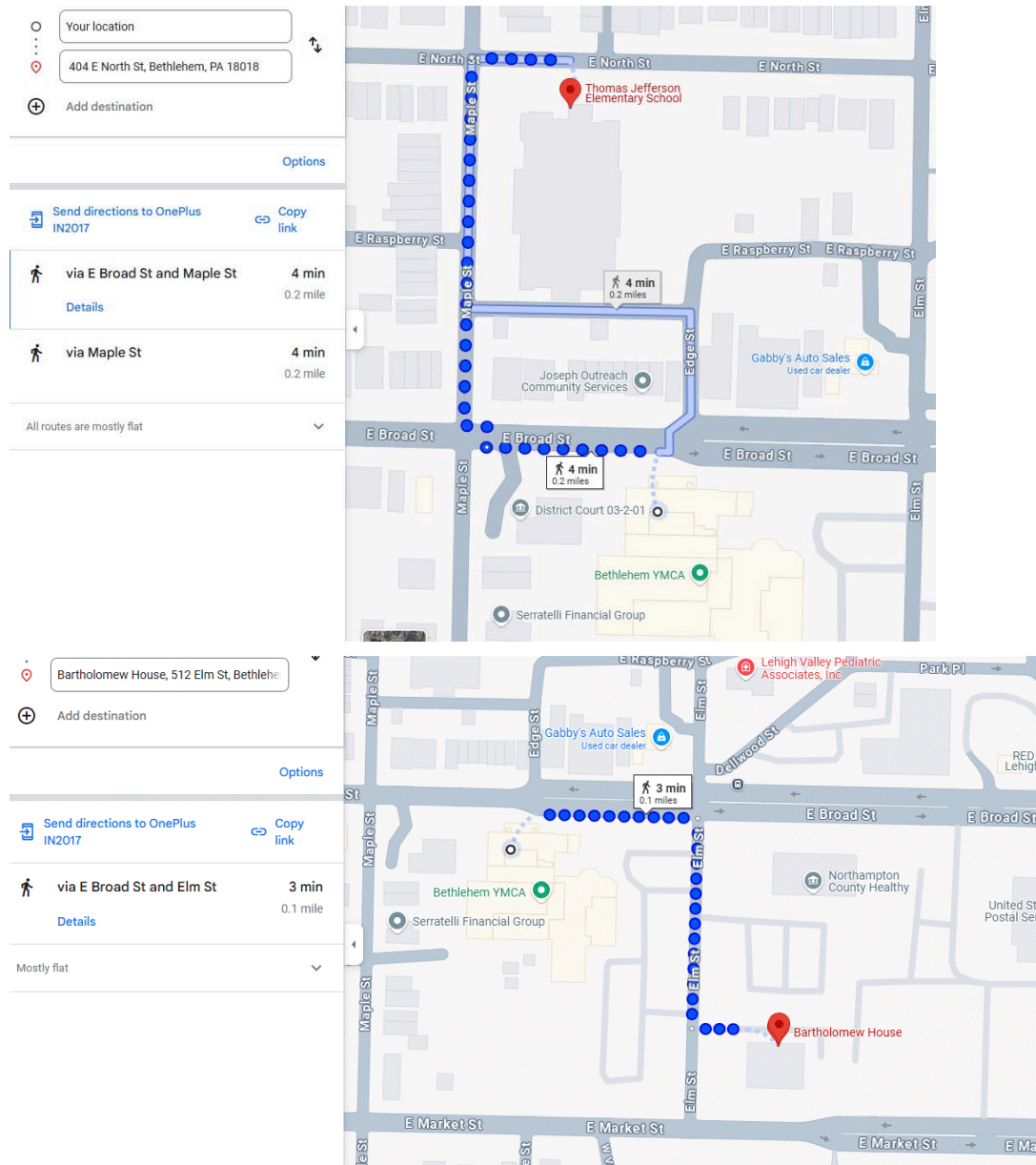
- ↑ Head north toward Zephyr Blvd
499 ft
- ↑ Continue onto Zephyr Blvd
328 ft
- ↪ Turn right onto Campus Dr
115 ft
- ↩ Turn left
● Destination will be on the right
387 ft

2934 Zephyr Blvd
Whitehall, PA 18052

Map details: Search along the route, Restaurants, Coffee, Groceries, Things to do, Zephyr Baseball Field, Zephyr Stadium, Campus Dr, 2932 Zephyr Boulevard, Stadium Dr, Augusta Dr, Halleck Dr, Whitehall-Coplay Middle School, CLIU EI at Gockley, Advertising, Layers, Google.

Camp Emergency Plans

Camp Northampton | Bethlehem

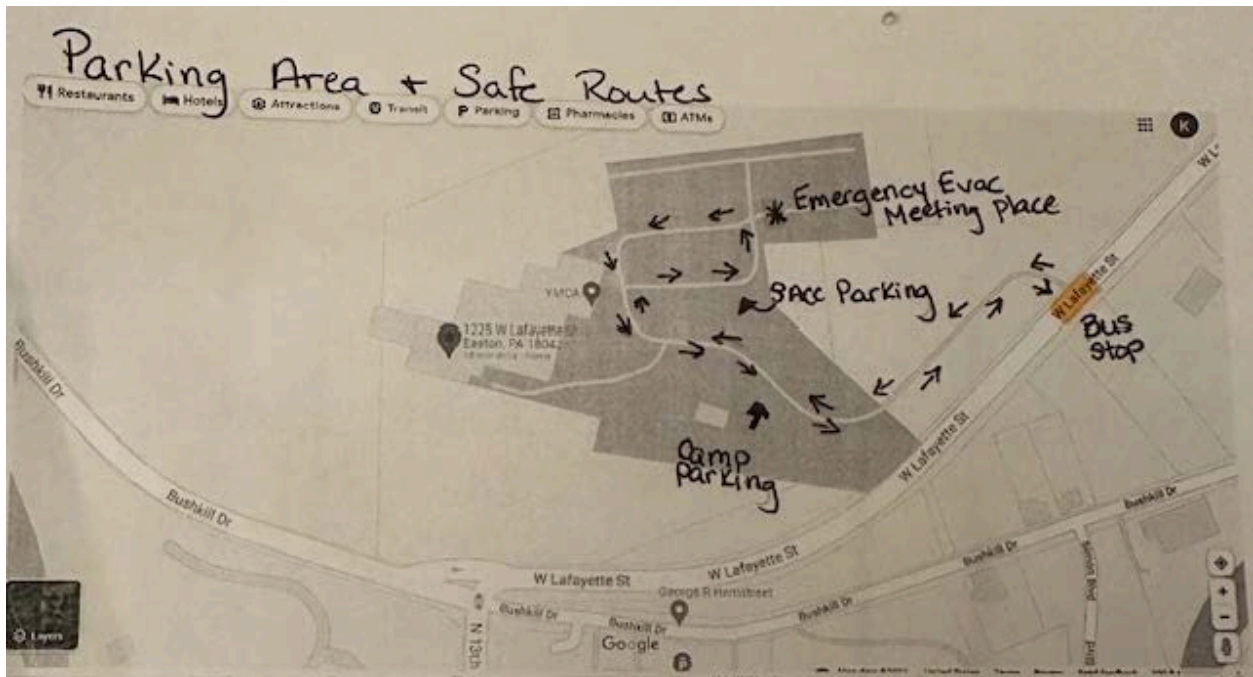


The image displays two screenshots of a mobile navigation application. The top screenshot shows a route from the Bethlehem YMCA to Thomas Jefferson Elementary School (404 E North St). The route is marked with a blue line and dots, starting from the YMCA, heading north on Maple St, then east on E North St, and finally south on E North St to the school. The estimated walking time is 4 minutes (0.2 miles). The bottom screenshot shows a route from the Bethlehem YMCA to Bartholomew House (512 Elm St). The route is marked with a blue line and dots, starting from the YMCA, heading east on E Broad St, then north on Elm St, and finally east on Elm St to the house. The estimated walking time is 3 minutes (0.1 miles). Both screenshots include search bars, destination input fields, and options for sending directions to OnePlus or copying the link.

Evacuation: Total evacuation of the facility may become necessary if there is a danger in the area. The childcare center will relocate to Thomas Jefferson Elementary, 404 E North St, Bethlehem, PA 18018 as a primary site; Bartholomew House, 512 Elm Street Bethlehem pa, 1018, as a secondary site.

Camp Emergency Plans

Camp Northampton | Easton/Philipsburg



In the event that we have to evacuate children and staff will meet at the designated emergency evacuation meeting place. Children and staff will then be transported to either Forks Community Center or the First United Church of Christ. All families will be notified by the Director on which location we have evacuated to.



FOR YOUTH DEVELOPMENT®
FOR HEALTHY LIVING
FOR SOCIAL RESPONSIBILITY

Camp Emergency Plans

Camp Northampton | Nazareth

EVACUATION ROUTE FROM: River Crossing YMCA Nazareth Off site, 4609 Newburg RD Nazareth Pa TO Lower Nazareth Elementary 4422 Newburg Rd Nazareth pa 18064

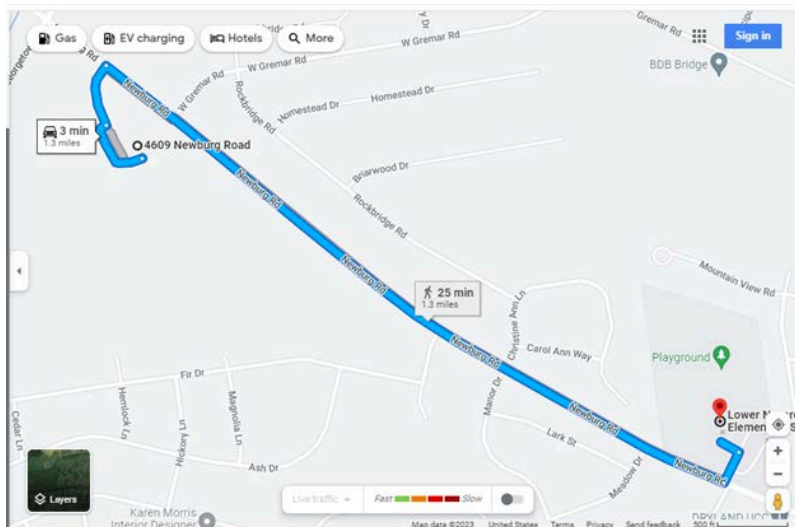
← from 4609 Newburg Rd, Nazareth, PA 18064
to Lower Nazareth Elementary School, 4422 Newb...

Fastest route now due to traffic conditions

4609 Newburg Rd
Nazareth, PA 18064

- ↑ Head west toward Newburg Rd
0.1 mi
- ↶ Turn left toward Newburg Rd
459 ft
- ↷ Turn right onto Newburg Rd
1.0 mi
- ↶ Turn left
243 ft
- ↶ Turn left
Destination will be on the right
148 ft

Lower Nazareth Elementary School
4422 Newburg Rd, Nazareth, PA 18064





FOR YOUTH DEVELOPMENT®
FOR HEALTHY LIVING
FOR SOCIAL RESPONSIBILITY

Camp Emergency Plans

Camp Northampton | Slate Belt

EVACUATION ROUTE FROM: River Crossing YMCA Child Care Center at Slate Belt Branch, 315 W. Pennsylvania Ave., Pen Argyl, PA 18072 TO St. Elizabeth of Hungary Church 300 W. Babbit Ave., Pen Argyl, PA 18072

