



YMCA MEMBERSHIP IS GOOD FOR BUSINESS

PARTNERING FOR A BETTER US

As an employer you know that health and well-being boost employee engagement and productivity. At the Y, we know that's important to the health of your organization and the overall health of our community. From fitness assessments to preventative health education, everything we do focuses on meeting the individual needs of each person. We provide a welcoming network of support where everyone has access to the resources and encouragement they need to thrive.

WITH A YMCA CORPORATE MEMBERSHIP, YOU AND YOUR EMPLOYEES WILL BENEFIT FROM:

- > Better Health: Leads to better work performance and a sense of well-being.
- > Positive Attitudes: Improves company wide morale.
- > Healthy Workforce: Reduces overall healthcare costs.
- > Wellness: Means lower turnover rates and absenteeism.

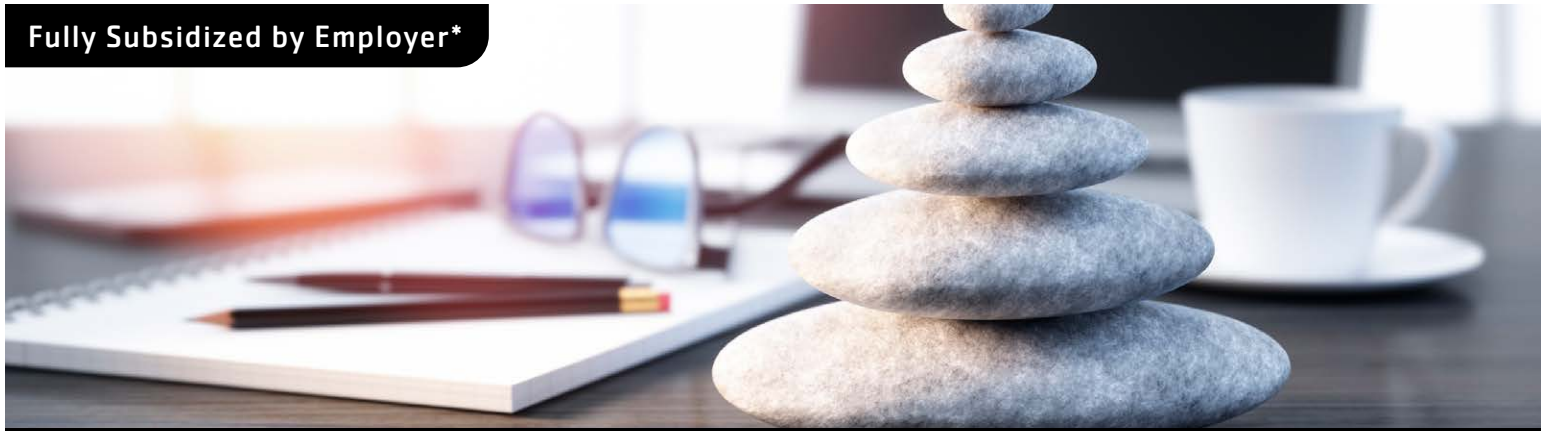
WHAT IS INCLUDED?

- > The YMCA will provide on-site enrollment upon request.
- > The YMCA will assist in promoting the corporate membership program and notify Human Resources of wellness programs, lunch and learns, community fairs, wellness challenges and any other services available to their employees.
- > "Try the Y" - a week pass for your employees to experience all that the Y offers.

QUESTIONS? Contact Maggie Lester at mlester@ymcarivercrossing.org

Focus on the health and wellness of your employes! Contact us TODAY.

ymcarivercrossing.org



OPTION 1: EMPLOYEE WELLNESS PROGRAM

EMPLOYEE YMCA MEMBER BENEFITS



Join fee is waived!
(A value of up to \$50).



Seasonal communications on programs, events and volunteer opportunities.



Receive member rate on all programs and services at the YMCA.



Virtual wellness access to Y Wellness 24/7, a virtual wellness platform, providing live and on-demand fitness classes, educational content and more.



Each employee will receive one complimentary fitness consultation every 90 days with InBody body composition analysis included at select locations.

EMPLOYER BENEFITS

- > Simple billing process—invoiced monthly by the YMCA for company contribution.
- > Facility usage reports are available through the YMCA upon request.
- > YMCA website recognition.
- > Representation at company health fairs and/or events upon request.
- > Receive member discounted pricing on facility rentals.
- > Dedicated YMCA Partner Well Live Well Team.
- > Early access to volunteer opportunities.

*Employer is responsible for 100% of monthly membership dues at a reduced flat rate.

MEMBERSHIP TYPE	DOYLESTOWN BRANCH	EMPLOYER CONTRIBUTION
Adult	\$88	\$80
Active Older Adult	\$69	\$63
2 Adults	\$142	\$128
2 Active Older Adults	\$112	\$101
Family 1	\$129	\$117
Family 2	\$145	\$131

Please note: The pricing reflects the membership costs at our Doylestown branch location. Membership costs vary by branch location and are subject to change.

Partially Subsidized by Employer*



OPTION 2: PARTNERS IN HEALTH

EMPLOYEE YMCA MEMBER BENEFITS



Join fee is waived!
(A value of up to \$50).



Seasonal communications on programs,
events and volunteer opportunities.



Receive member rate on all programs and
services at the YMCA.



Virtual wellness access to Y Wellness 24/7,
a virtual wellness platform, providing live
and on-demand fitness classes, educational
content and more.



Each employee will receive one
complimentary fitness consultation every 90
days with InBody body composition analysis
included at select locations.

EMPLOYER BENEFITS

- > Simple billing process—invoiced monthly by the YMCA for company contribution.
- > Facility usage reports are available through the YMCA upon request.
- > YMCA website recognition.
- > Representation at company health fairs and/or events upon request.
- > Receive member discounted pricing on facility rentals.
- > Dedicated YMCA Partner Well Live Well Team.
- > Early access to volunteer opportunities.

*Employer agrees to partner with the Y to improve their employees' health and well-being. The employer will contribute a portion of the monthly dues and the YMCA will match 50% of employer's contribution up to \$20 per employee per month.

MEMBERSHIP TYPE	DOYLESTOWN BRANCH	EMPLOYER CONTRIBUTION	YMCA CONTRIBUTION	EMPLOYEE CONTRIBUTION
Adult	\$88	\$20	\$10	\$58
Active Older Adult	\$69	\$20	\$10	\$39
2 Adults	\$142	\$20	\$10	\$112
2 Active Older Adults	\$112	\$20	\$10	\$82
Family 1	\$129	\$20	\$10	\$99
Family 2	\$145	\$20	\$10	\$115

Please note: The pricing reflects the membership costs at our Doylestown branch location. Membership costs vary by branch location and are subject to change.



OPTION 3: EMPLOYEE WELLNESS ADVANTAGE

EMPLOYEE YMCA MEMBER BENEFITS



Join fee is waived!
(A value of up to \$50).



10% reduction on monthly membership fees.



Seasonal communications on programs, events and volunteer opportunities.



Receive member rate on all programs and services at the YMCA.



Virtual wellness access to Y Wellness 24/7, a virtual wellness platform, providing live and on-demand fitness classes, educational content and more.



Each employee will receive one complimentary fitness consultation every 90 days with InBody body composition analysis included at select locations.

EMPLOYER BENEFITS

- > YMCA website recognition.
- > Representation at company health fairs and/or events upon request.
- > Receive member discounted pricing on facility rentals.
- > Dedicated YMCA Partner Well Live Well Team.
- > Early access to volunteer opportunities.

PARTNER WELL, LIVE WELL

We are excited to offer more opportunities for our corporate partners through our Partner Well Live Well program. To learn more, click [HERE](#) for additional information.

NUMBER OF EMPLOYEES	ANNUAL INVEST FEE
Less than 10 employees	\$1,500
11-50 employees	\$3,000
51-100 employees	\$5,000
101+ employees	\$10,000